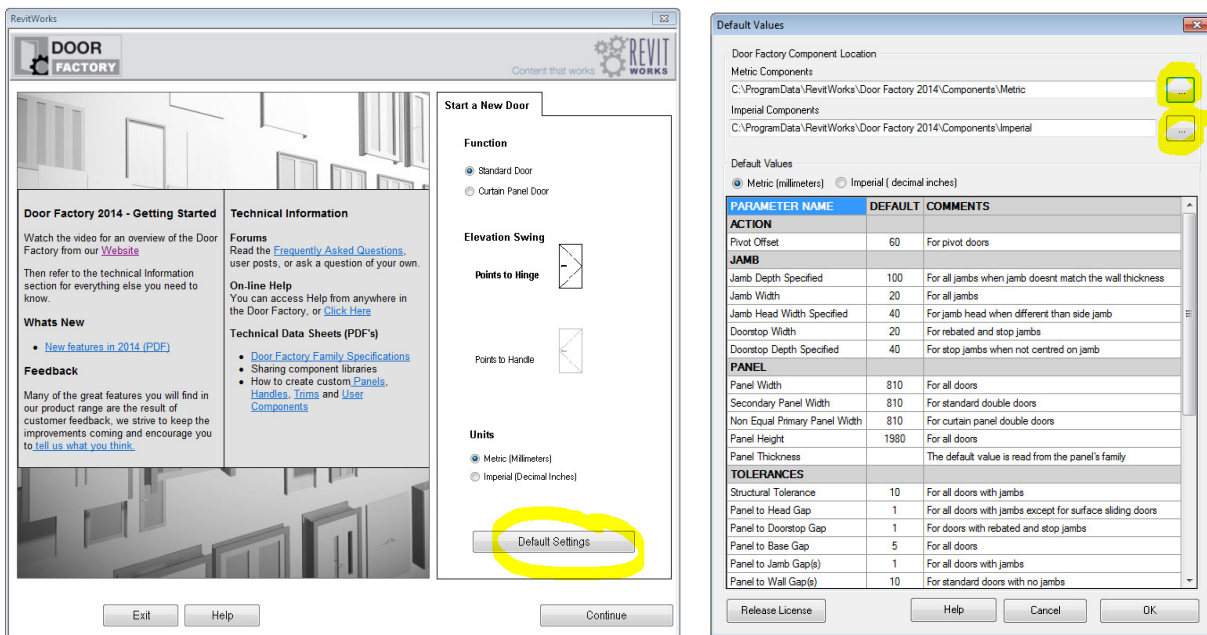




Door Factory: Installation recommendations for sharing components with multiple users.

Recommended installation process for the RevitWorks Door Factory 2014 version. The 2013, 2012 and 2011 versions are similar (ie: substitute "2014" with the relevant version number)

1. During the installation process all components (panels, handles etc) get installed to C:\ProgramData\RevitWorks\Door Factory 2014\Components
2. Copy this component directory (and all subdirectories and files) onto a networked location on your server.
3. The first time you run Door Factory, go to "Default Settings" and change the Door Factory component locations to your new location as per screenshots below:



Alternatively, you can manually change the directory setting files by editing the stored location within the following text files:

C:\ProgramData\Door Factory 2014\ComponentDirectory_M.txt for the metric component location
C:\ProgramData\Door Factory 2014\ComponentDirectory_I.txt for the imperial component location

Default Values

When you update the Default Values (under System Settings as above) the Door Factory saves these values within the following text files:

C:\ProgramData\Door Factory 2014\DefaultValues_M.txt for the metric default values
C:\ProgramData\Door Factory 2014\DefaultValues_I.txt for the imperial default values

You can update other users by overwriting any of their text files (as above) with your updated ones. DO NOT move or rename these .txt files, the Door Factory relies on them.